

# CanNeed Seam Sight™ Full Automatic Seam Measurement System

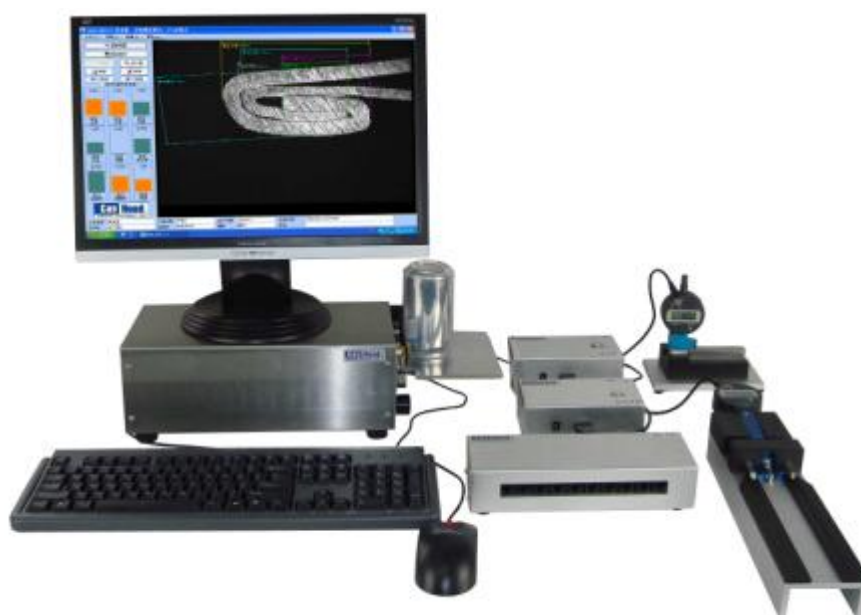
Automatic seam measurements for cans



Seam Sight™ Automatic Seam Monitor



CSS-100B Anti-noise Seam Saw



Seam Sight™ Full Automatic Seam Measurement System

Canned Seam Sight™ Full Automatic Seam Measurement System (V2) is the solution of full range double seam measurement. The automatic seam monitor of Canned Seam Sight™ system has adopted the advanced optical system and Golden Lens™ video capture device, which ensured the high image definition and the measurement accuracy. The Seam Sight™ system is equipped with the new seam measuring software Seam Sight™.

Seam Sight™ professional seam measuring software will do the line positioning automatically and the measurement to be finished within 1 second! The software also adopted the data base management system, all the measurement data will be restored in the system data base, so that to enhance the software performance and more convenience in data management. The result statistic and result chart has been added in the data base screen for overview and comparison. Meanwhile, the measurement screen has been optimized for a vivid result display.

The magnifier option enable users to magnify the testing image for a more accurate line positioning, so that the measurement results are more accurate and reliable.

**Features:**

- Full automatic line positioning, measurement finished within 1 second!
- Equipped with Golden Lens™ video capture device which ensured the high image definition;
- Software adopted data base management system, users can review or re-measure the saved projects at any time.
- 12 Measuring Items: Seam Length, Body Hook Length, End Hook Length, Overlap, Seam gap, Overlap rate, Body Hook lapping rate, End Hook lapping rate, On-screen Seam Thickness; Actual Seam Thickness; Actual countersink; Tightness
- SPC compatible, use a data adapter to collect the data from Mitutoyo Digital Indicator (Actual Seam Thickness; Actual countersink)
- Data can be stored in an Excel file;
- Report format can be customized, flexible for different report styles of different companies.
- Graph chart statistic function, automatically analyze and compare the measurement results.
- Magnifier option enable users to magnify the testing image for a more accurate line positioning;
- Measured values are displayed in on-screen and alarm if values are not within specs;
- Seam image can be printed, stored;
- Provided with calibration piece, calibrate at any time;
- Use the monochromatic source, make it much more durable.

**Technical data (changes reserved):**

Power supply: 115 V/230V

Serial interface: RS 232 C

Resolution: 0.001mm

Accuracy: . 0.005 mm

Magnification factor: 60 X

Line positioning magnification factor: 180 X

Languages: English / Chinese

Cans dia. :52-200 mm, custom made up to 300

Dimensions: 400 x 200 x 150 mm(W x D x H)

Net Weight: 10 kg

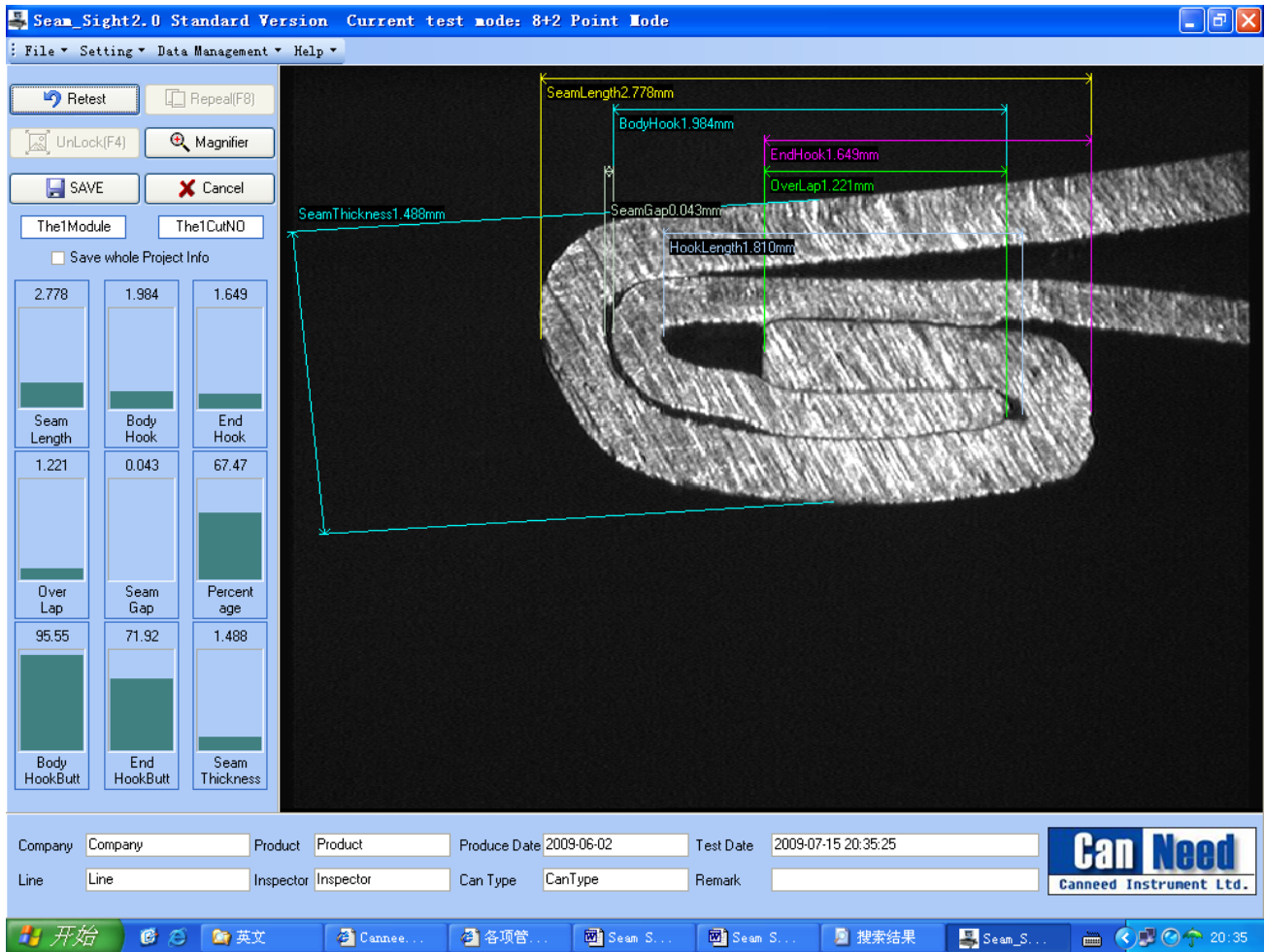
**Seam Sight™ Automatic Seam Measurement System consisting of:**

- \* Seam Sight™ Video Seam monitor
- \* Seam measurement software Seam Sight™
- \* Calibration piece 2mm

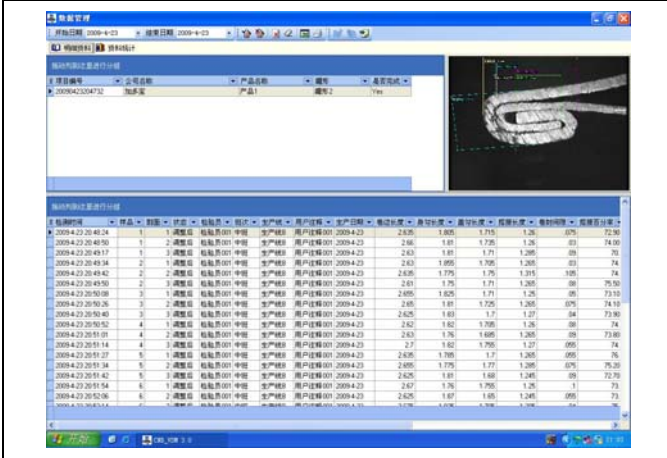
**Option:**

- \*CSS series Seam Saw
- \*STG-200-d Seam Thickness Gauge (digital)
- \*CSG-d Countersink Gauge (digital)
- \*ADI-100 Adapter of Digital Indicator
- \*TRC-200 Transporter of Computer

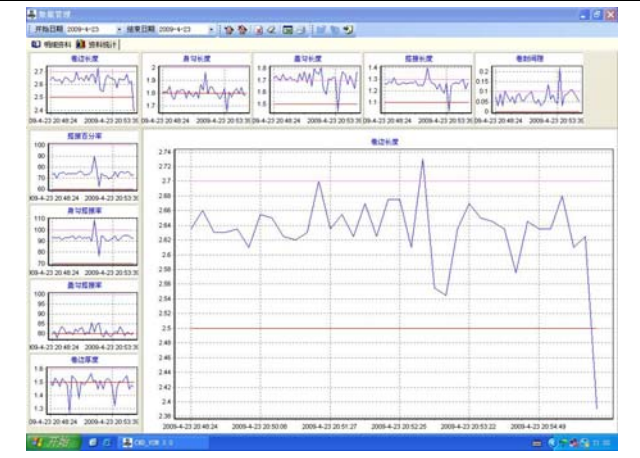
# Seam Sight™ Professional Software (Languages: English / Chinese)



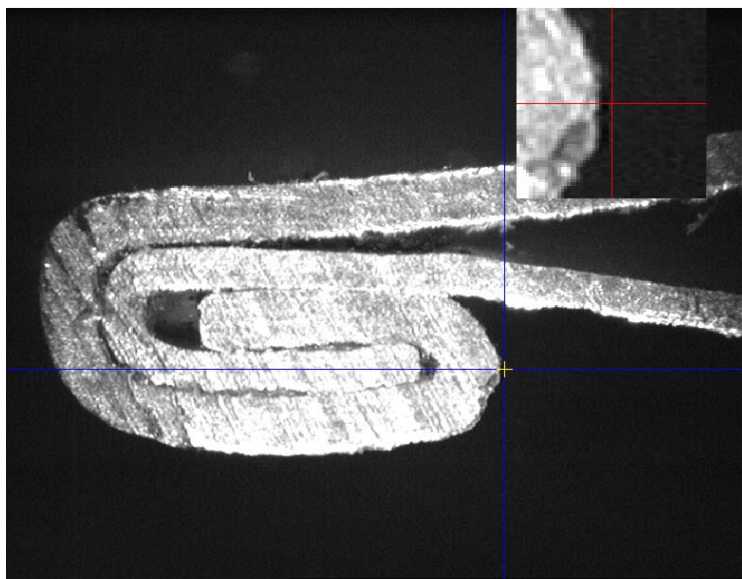
**Data base management system saves the result and image of each measurement. It's convenient to overview and re-checks.**



**Various statistics charts analyze the products quality automatically.**



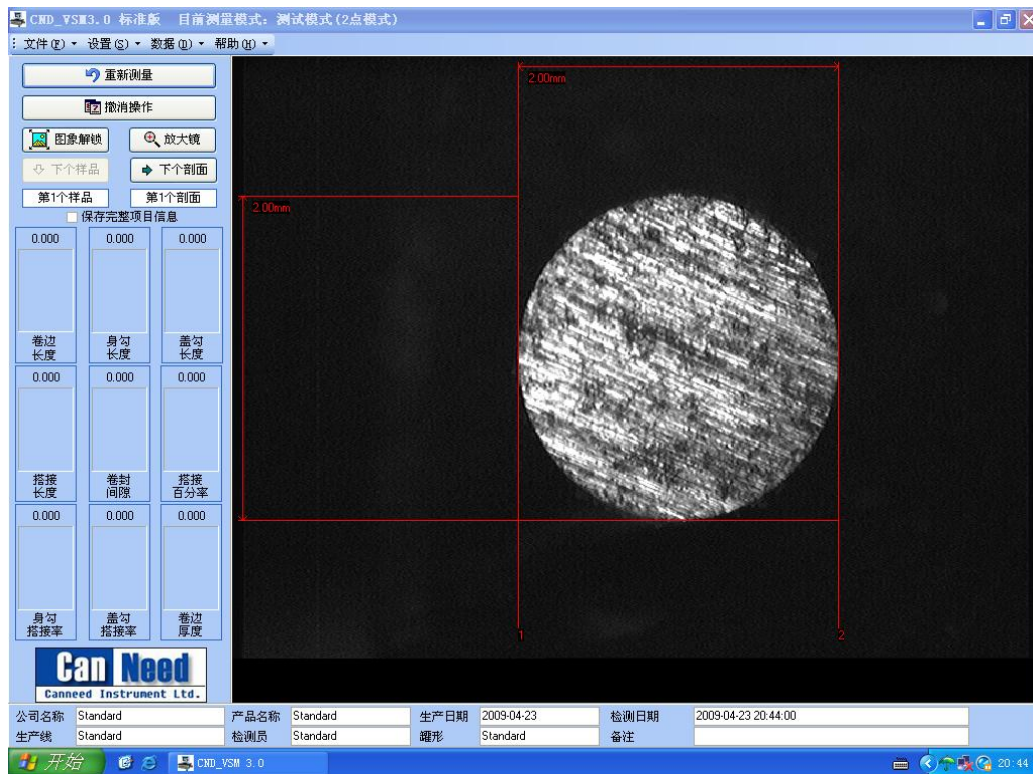
### Magnifier Function




### User-defined Report, accord with your own requirement

Seam Test Report																
Company	Cocacola						Product	330ml								
CanSupplier	123						CanCode	444								
EndSupplier	EndSupplier						EndCode	EndCode								
Inspector	Inspector						Time	Noon Shift								
Report ID	20090603165640						UserRemark	UserRemark								
CanType	206						Product Date	2009-06-03								
Line	Line						Units	mm								
All Sample	6						All CutNO	3								
Date Time	Sample	CutNO	Seam Length	Body Hook	End Hook	Over Lap	Seam Gap	Percentage	Body Hook Butt	End Hook Butt	Seam Thickness	Seam Thickness Range	Corrosion Range	TR	Notes	
Up Value			5.000	5.000	5.000	5.000	5.000	100	100	100	5.000	5.000	5.000	100.000		
STD Value			2.500	2.500	2.500	2.500	2.500	50	50	50	2.500	2.500	2.500	50.000		
Down Value			0.000	0.000	0.000	0.000	0.000	0	0	0	0.000	0.000	0.000	0.000		
2009-06-03 1656:46	1	1	2.542	1.848	1.519	1.135	0.031	67.78	95.93	71.85	1.434	0.000	0.000	0.000		
2009-06-03 1656:53	1	2	2.548	1.848	1.519	1.135	0.037	67.78	95.93	71.85	1.440	0.000	0.000	0.000		
2009-06-03 1656:57	1	3	2.536	1.841	1.519	1.141	0.043	68.15	95.93	72.22	1.434	0.000	0.000	0.000		
2009-06-03 1657:14	2	1	2.542	1.848	1.525	1.141	0.037	68.15	95.93	72.22	1.434	0.000	0.000	0.000		
2009-06-03 1657:18	2	2	2.542	1.848	1.519	1.135	0.031	67.78	95.93	71.85	1.434	0.000	0.000	0.000		
2009-06-03 1657:22	2	3	2.542	1.848	1.525	1.141	0.037	68.15	95.93	72.22	1.434	0.000	0.000	0.000		
2009-06-03 1657:28	3	1	2.548	1.848	1.519	1.135	0.037	67.78	95.93	71.85	1.440	0.000	0.000	0.000		
2009-06-03 1657:34	3	2	2.542	1.848	1.519	1.135	0.031	67.78	95.93	71.85	1.434	0.000	0.000	0.000		
2009-06-03 1657:37	3	3	2.542	1.848	1.519	1.135	0.037	67.78	95.93	71.85	1.434	0.000	0.000	0.000		
2009-06-03 1657:44	4	1	2.542	1.848	1.525	1.141	0.037	68.15	95.93	72.22	1.434	0.000	0.000	0.000		
2009-06-03 1657:47	4	2	2.542	1.848	1.519	1.135	0.037	68.03	96.28	71.75	1.434	0.000	0.000	0.000		
2009-06-03 1657:51	4	3	2.542	1.841	1.525	1.141	0.043	68.15	95.93	72.22	1.434	0.000	0.000	0.000		
2009-06-03 1657:56	5	1	2.542	1.848	1.525	1.141	0.031	68.15	95.93	72.22	1.434	0.000	0.000	0.000		
2009-06-03 1658:00	5	2	2.542	1.848	1.519	1.135	0.037	67.78	95.93	71.85	1.434	0.000	0.000	0.000		
2009-06-03 1658:03	5	3	2.542	1.848	1.525	1.141	0.037	68.15	95.93	72.22	1.434	0.000	0.000	0.000		
2009-06-03 1658:07	6	1	2.542	1.841	1.525	1.141	0.037	68.15	95.93	72.22	1.434	0.000	0.000	0.000		
2009-06-03 1658:11	6	2	2.542	1.848	1.525	1.141	0.037	68.15	95.93	72.22	1.434	0.000	0.000	0.000		
2009-06-03 1658:17	6	3	2.542	1.841	1.525	1.141	0.043	68.15	95.93	72.22	1.434	0.000	0.000	0.000		
Min			2.536	1.841	1.519	1.135	0.031	67.78	95.93	71.75	1.434	0.000	0.000	0.000		
Max			2.548	1.848	1.525	1.141	0.043	68.15	96.28	72.22	1.440	0.000	0.000	0.000		
Bound			0.012	0.007	0.006	0.006	0.012	.37	.35	.47	0.006	0.000	0.000	0.000		
Average			2.542	1.846	1.522	1.138	0.037	67.999	95.949	72.05	1.435	0.000	0.000	0.000		
Seam_Sight Seam Test Software Copyright ©2009 CanNeed Instrument Ltd www.canneed.com																

## Calibration function



## The CSS series Seam Saw:

		
<p>CSS-100B Anti-noise Seam Saw Applicable for Beverage cans of 65mm diameter</p>	<p>CSS-200 Seam Saw Applicable for cans of 45-260mm diameter</p>	<p>CSS-300 Seam Saw Applicable for all types of cans, especially the large paint drums, square cans.</p>