



PRODUCT INFORMATION SHEET

Z302 Finished Can Inspection

email: tms.sales@trac-group.com
www.trac-group.com

The **NEW** Finished Can Inspection machine from TRAC Measurement Systems defines the standard for Dimensional inspection of Beverage / Beer Cans.

The Measurement Cycle is then initiated via the PC running the TMS GaugeXplorer Measurement and Machine Control Software.

Available in either Semi-Automatic (Manually Loaded), Automatic (Conveyor Loaded) or In-Line Variants, these machines can be supplied for a single fixed Body diameter of Can, or for facilities producing multiple body diameters, manual or automatic "Changeover Capability" can be specified for measurement of both Pre-Necked and Finished Cans.

Typically supplied with the capability to measure 2 can heights, additional heights may also be specified or retrofitted at a later date in the field.

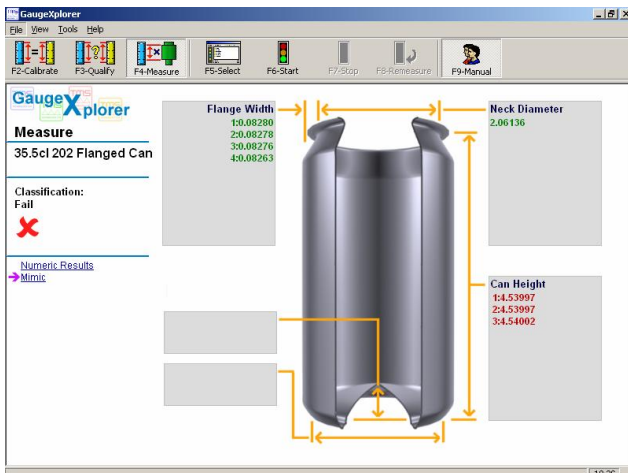
With its Modular design concept, a host of options may also be specified to complement your inspection requirements.

State of the Art Windows Software ensures the operator is presented with the latest measurement information, such as Average, Range, Max and Min for all features.



"Built on 10 years of product development, this machine has been proven the number one choice for leading packaging manufacturers around the world."

GaugeXplorer





PRODUCT INFORMATION SHEET

Z302 Finished Can Inspection

email: tms.sales@trac-group.com
www.trac-group.com

The TRAC Measurement Systems Modular design construction gives complete flexibility when specifying your requirements. Our extensive list of options ensures a 'best fit' solution to your inspection needs.

Finished Can Gauge Options Include:-

- Axial Load / Dome Reversal Stations
- Dome Reform Tooling Option
- Multi Lane Input Conveyor
- Gravity Feed Input
- Pass / Fail sorting
- Industrial PC / Keyboard
- Network Interfacing



Using High Precision transducer technology and Certified Calibration Setting Masters from our UKAS accredited laboratory, you can be assured of accurate, repeatable and traceable measurement of your finished cans, 24 hours a day, seven days a week.....

TECHNICAL SPECIFICATION

Component Range

Body Diameter (202) - (307)

Features Measured

Flange Width (4 Pos)	+/- 0.010mm (+/- 0.0004")
Can Height (3 Pos)	+/- 0.010mm (+/- 0.0004")
Internal Neck Dia.	+/- 0.010mm (+/- 0.0004")
Reform Dome Dia. (opt.)	+/- 0.010mm (+/- 0.0004")
Reform Dome Depth (opt.)	+/- 0.010mm (+/- 0.0004")
Axial Load (opt.)	+/- 10N
Dome Reversal (opt.)	+/- 5kPa

Accuracy

Repeatability

0.030mm (0.0012")
0.030mm (0.0012")
0.030mm (0.0012")
0.025mm (0.00098")
0.025mm (0.00098")

Cycle Time: Approx. 30 seconds per Can (at 4 Positions)



Trac Measurement Systems Limited

Nedge Hill Science Park, Telford
Shropshire, TF3 3AJ United Kingdom
Tel: 44 (0) 1952 210020
Fax: 44 (0) 1952 299804
email: tms.sales@trac-group.com
www.trac-group.com